

Dietz Design
A Limited Liability Company
Architecture - Planning
6650 N. 47th Avenue, Ste. 1
Glendale, Arizona 85301
(623) 640-0968
fax (623) 847-9063

www.dietzdesignllc.com

Tenant Improvement
Executive Office Suites
7565 E. Eagle Crest Drive (Las Sendas Condominiums)
Mesa, Arizona

These drawings, designs and concepts, are the property of Dietz Design L.L.C., who reserves the right of ownership, including but not limited to, common law copyright. The use of these plans for construction shall be restricted to the address stated on the plans only. These plans are not to be copied, reproduced, changed or reused in any manner without the express written permission of Dietz Design L.L.C.

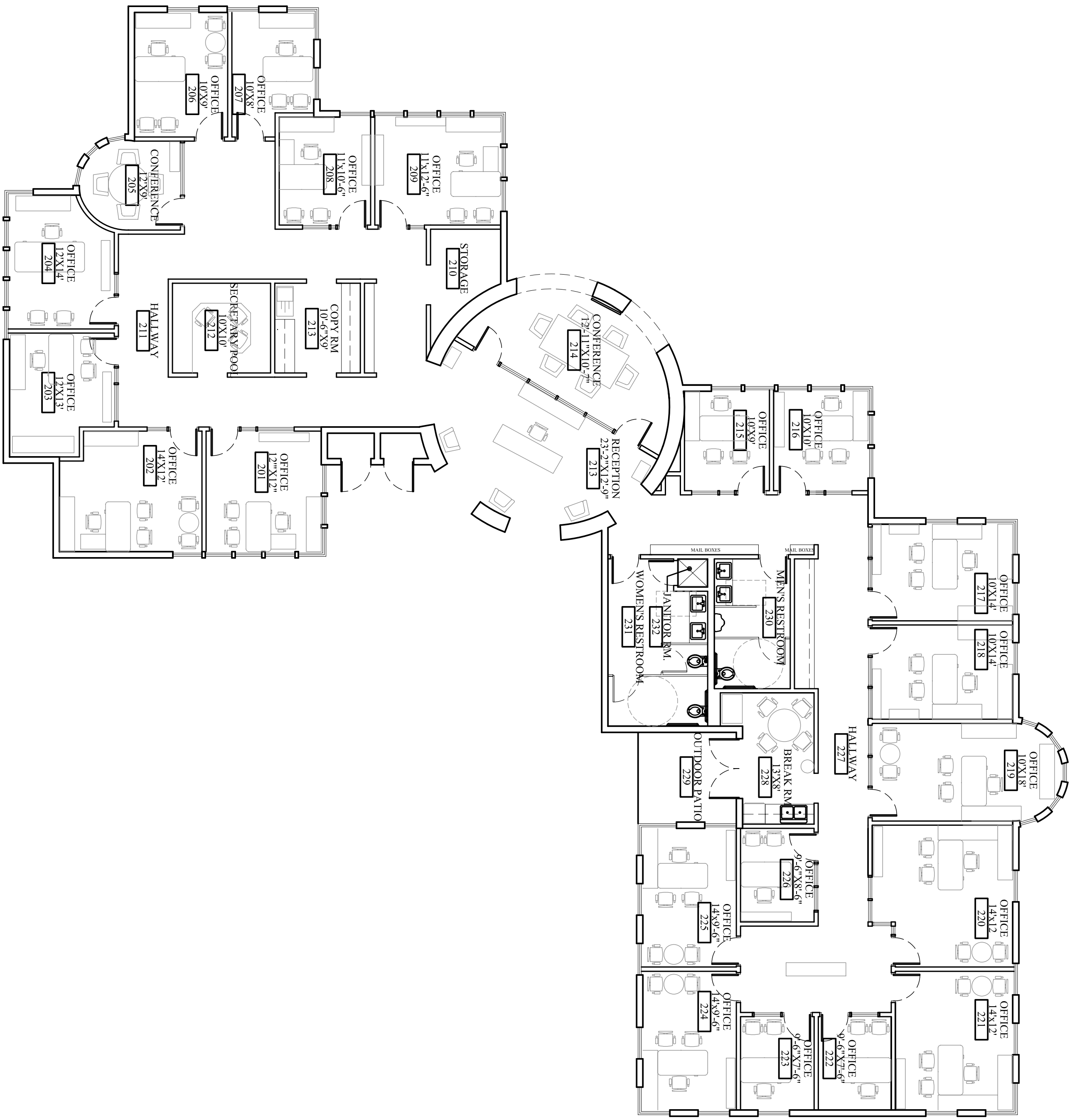
REVISIONS

CLIENT REVISIONS 6-5-08
CLIENT REVISIONS 6-30-08

JOB NUMBER: ###
DATE: 5/19/08
DRAWN BY: CS
CHECKED BY: JD



SHEET NUMBER:



FLOOR PLAN (OPTION H)
SCALE: 1/8" = 1'-0"
north